

Sopransaxophon

Mondphasen für Ensemble

1. Mondphasen für Ensemble

A $\text{♩} = 104$
3

8

12

B

16

21

26

C

30 **2** Fmaj7/E

36 Gmaj7/F#

D

41 Bm(maj7) G7(#11)/B Bm(maj7) G7(#11)/B₍₄₎

E

45 D/C# C#7(#9) Dm7/C Bm/C C#/C C(add#9) Em6/B

F

52 Gm/Bb G#m7(b5) F#/A#

55 G#m7(b5) F#/A# G#m7(b5) F#/A# G#m7(b5) F#/A#

G

nur 1.mal

61 D/C# C#7(#9) Dm7/C Bm/C

65 C#/C C(add#9) Em6/B Gm/Bb

69 G#m7(b5) F#/A# G#m7(b5) F#/A#

repeat for solos

73 G#m7(b5) F#/A# G#m7(b5) F#/A#

H

77 D/C# C#7(#9) Dm7/C Bm/C C#/C C(add#9) Em6/B Gm/Bb

85 G#m7^(b5) 1 F#/A# 1 G#m7^(b5) 2 F#/A#

89 Am(maj7) B7^(#11)/A 1 Am(maj7) B7^(#9)/A 2

94 I 3

101

105

109

114

119

124 2 1 1 4 ♯ = 113

A

Teil 2

1.x tacet

5

11

17

To Coda ⊕

22

1. 4

27

2.

31

B
D#m7(b13)

33

35

Cmaj7(#11)

37

39

B7(9)

41

43 $D\#m7^{(b13)}$

45

47 $Dmaj7^{(b11)}$ $D\#m7^{(b13)}$ $Cmaj7^{(b11)}$ $B7^{(b9)}$

49 $D\#m7^{(b13)}$ open D.C. al Coda

51 \oplus Coda

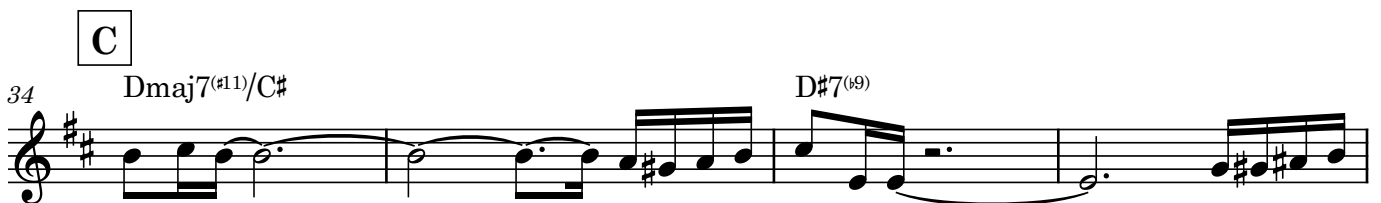
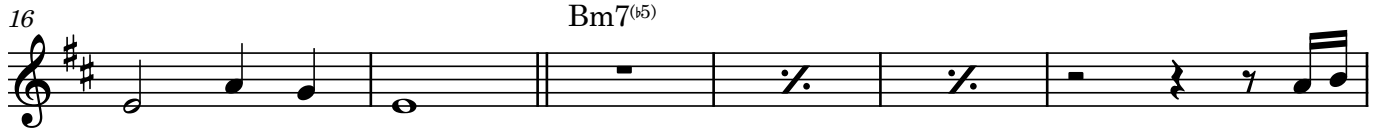
55

1 **A** $\text{♩} = 60$ Teil 3

5

11

B ♩ = 82
Bm7^(b5)



D

50 C#maj7(#11) Emaj7(#11)/D# Em(maj7)

56 Emaj7(#11)/D# Dmaj7(#11) Gm7

61 C#maj7(#11) F#maj7(#11) repeat for Solo

66 Fmaj7 C#maj7 Dm7 Ebmaj7 Dm7 Bbm7

72 C#maj7/C Dm7 Bbm7 1. F#maj7(#11) 2. C#maj7(#11)/C C#maj7(#11)

78 Emaj7(#11)/D# Em(maj7) Emaj7(#11) Dmaj7(#11) Gm7

84 C#maj7(#11)/C F#maj7 Fmaj7 C#maj7(#11) Dm7

90 Ebmaj7(#11) Dm7 Bbm7 C#maj7(#11)/C Dm7 Bbm7

96 F#maj7(#11) Fmaj7

$\%$
A $\text{♩} = 132$

Teil 4

1 **10**

13

17 **B**

20

23

26

30 *cresc.*

34 **To Coda** \oplus

1

pp

39

C

41 **F#m7(b13)** **C#/D** **Am(maj7)** **C#7/B** **Dmaj7(#11)** **C#7/D**

53 **D7(#11)** **C#7/B** **/B** **F#7(#11)** **F7(#9)** **F#7(#11)**

63 **Gm(maj7)** **Ab7(#11)** **C#7(#11)** **C7(#11)** **B7(#11)** repeat for solos

⊕ Coda

69 on cue **4**
D.S. al Coda

D

76