

Drums

# Music After Stories From The Thousand And One Nights

Hugo Read

♩=70

## 1. Sultan's theme

TACET

Musical staff for the Sultan's theme, marked TACET. It shows a 5/4 time signature, a double bar line, and a 3/4 time signature at the end.

## Scheherazade

### Teil 2

1

Musical staff for Scheherazade Teil 2, starting at measure 1. It features a 3/4 time signature and a drum pattern of eighth notes with accents.

5

Musical staff for Scheherazade Teil 2, starting at measure 5. It continues the drum pattern of eighth notes with accents.

9

Musical staff for Scheherazade Teil 2, starting at measure 9. It continues the drum pattern of eighth notes with accents.

13

Musical staff for Scheherazade Teil 2, starting at measure 13. It includes a first ending bracket and a repeat sign.

17

Musical staff for Scheherazade Teil 2, starting at measure 17. It includes a second ending bracket and a repeat sign.

21

Musical staff for Scheherazade Teil 2, starting at measure 21. It continues the drum pattern of eighth notes with accents.

25

Musical staff for Scheherazade Teil 2, starting at measure 25. It continues the drum pattern of eighth notes with accents.

## Arabien night

### Teil 3

1 ♩=180

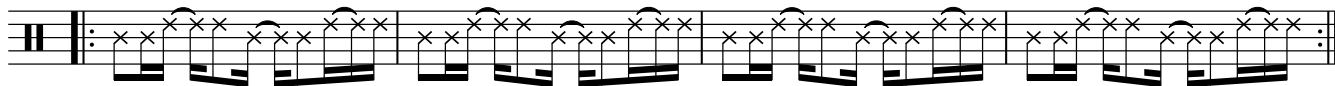
4

Musical staff for Arabien night, marked with a 7/8 time signature and a double bar line.

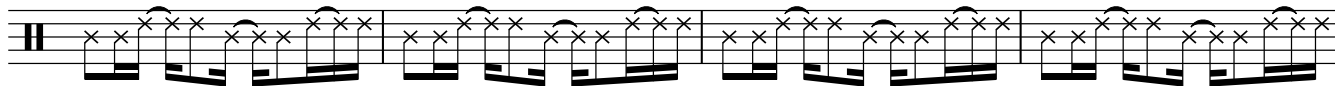
# Drums

2

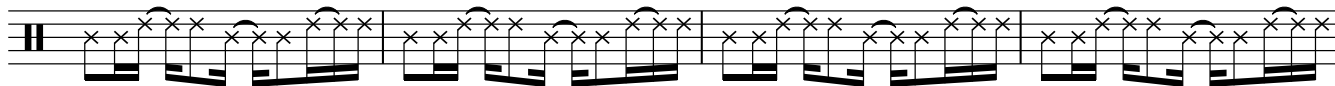
5



9



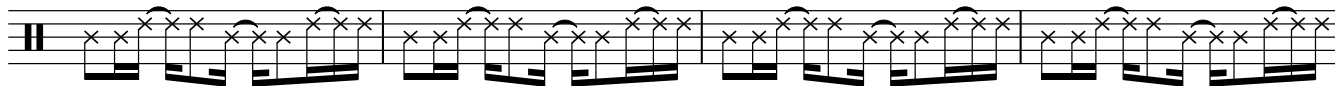
13



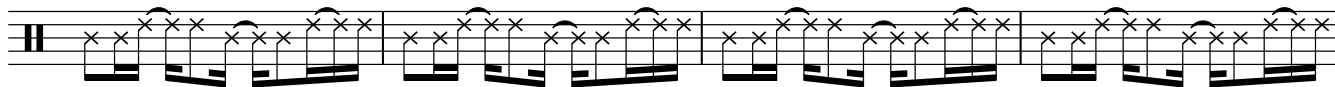
17



21



25



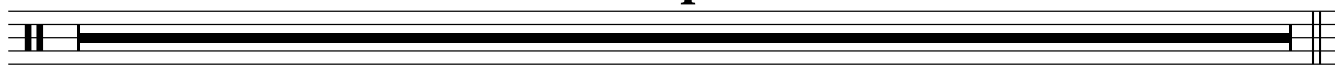
29



30

on cue Piano

4

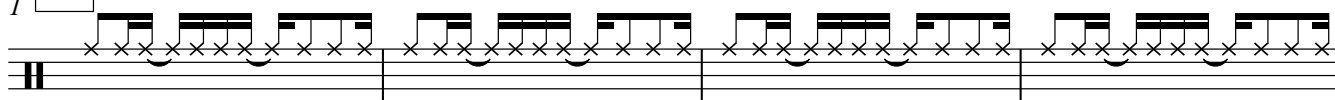


## The young prince and princess

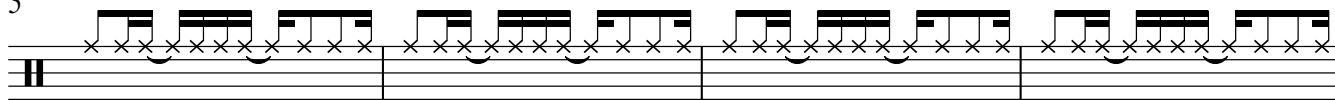
1

A

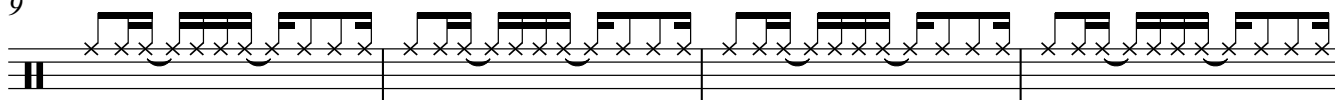
Teil4



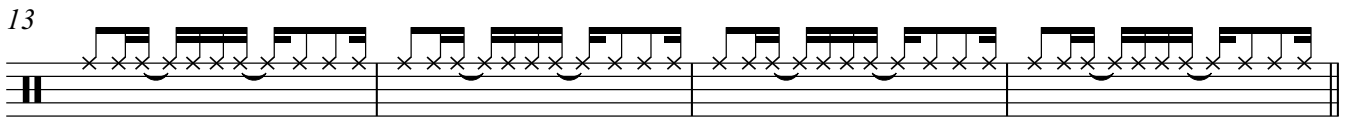
5



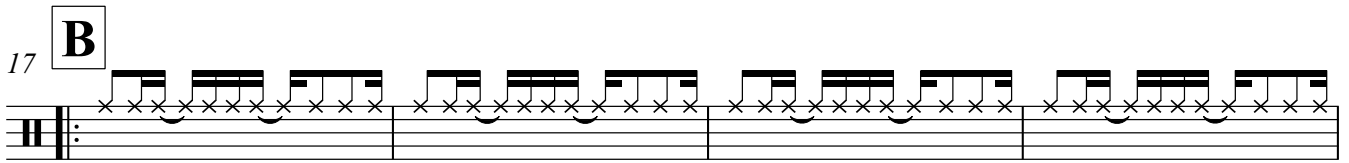
9



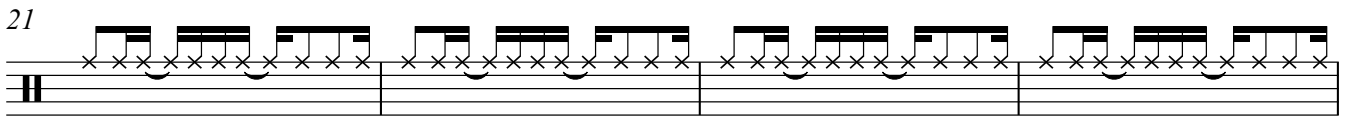
13



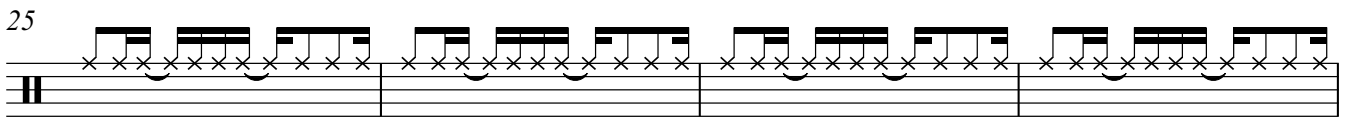
17 **B**



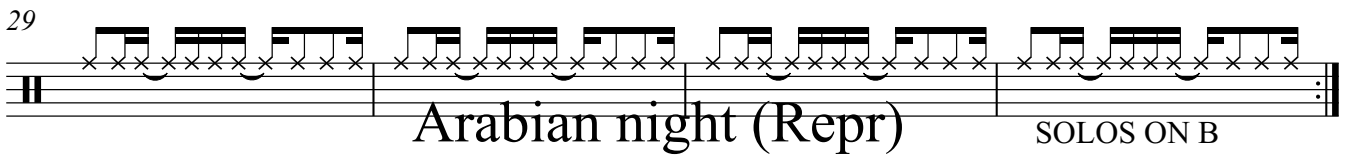
21



25

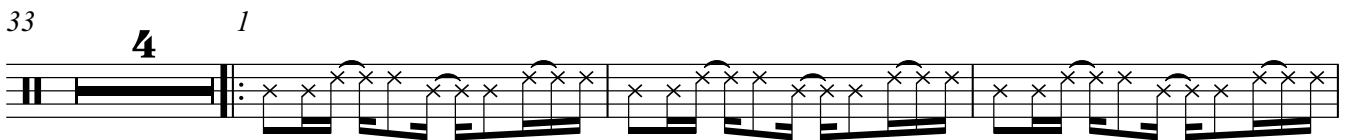


29

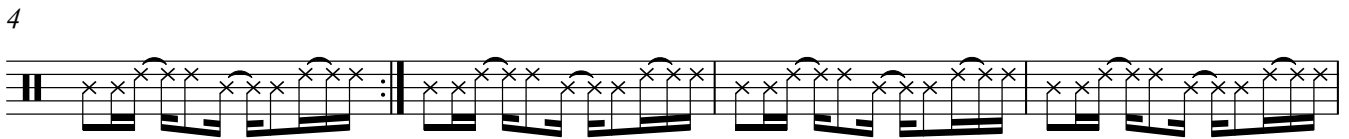


Arabian night (Repr) SOLOS ON B

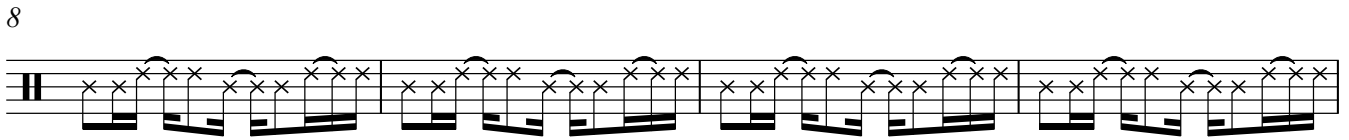
33 **4** *1*



4

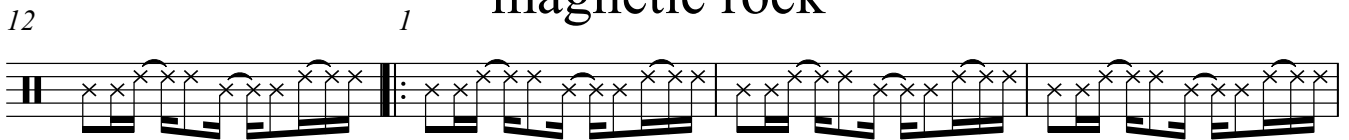


8

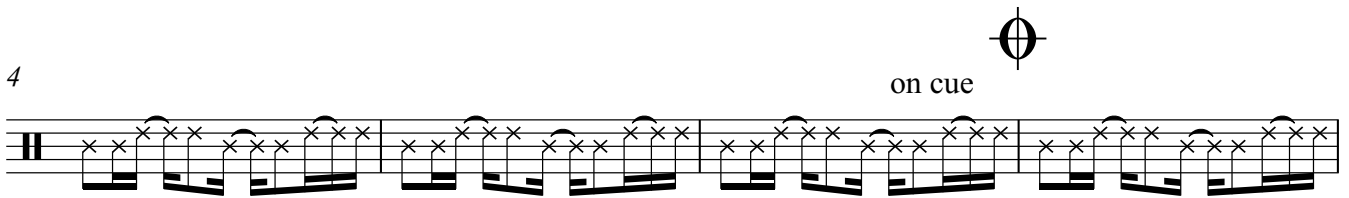



Shipwreck on a magnetic rock

12 *1*



4



on cue 

# Drums

4

8

