

Elektro-Bass

Double Bass

Music After Stories From The Thousand And One Nights

Hugo Read

♩=70

1.Sultan's theme

3

9

13

17

2 Double Bass

22

26

30

34

38

♩=120

Scheherazade

1

Teil 2

Dm^{7b13} Bbm^{7(b13)/Db} Cm^{13/Eb} D^bma^{7(#4)}

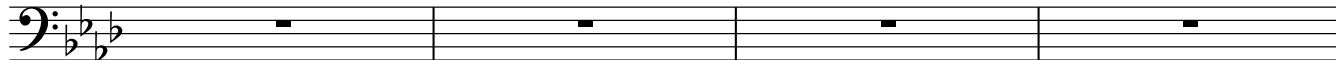
5

Dm^{7b13} Bbm^{7(b13)/Db} Cm^{13/Eb} Ema^{7(#5)}

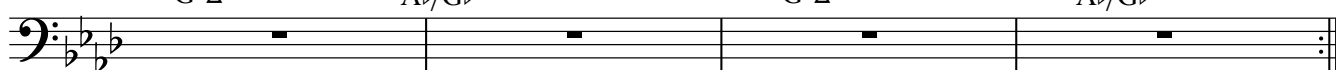
Elektro-Bass, Double Bass

2

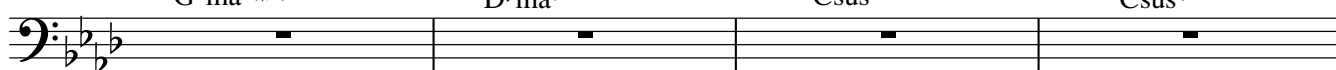
9 $G^bma7(\#4)$ $Fm7/Ab$ Gm^{11}/Bb $Fm7/Ab$



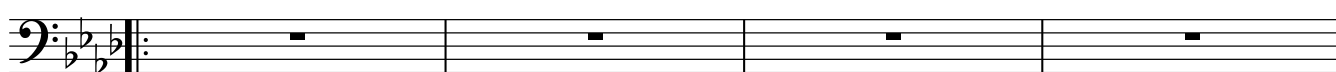
13 1. $G^b\Delta7\#11$ Ab/Gb $G^b\Delta7\#11$ Ab/Gb



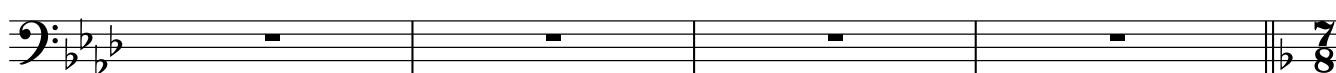
17 2. $G^bma7(\#4)$ D^bma7 $Csus^4$ $Csus^4$



21 $D^b\Delta7\#11$ $A^b\Delta7\#11$ $C\Delta^7$ $C\Delta^7$



25 $D^b\Delta7\#11$ $A^b\Delta7\#11$ $C\Delta^7$ $C\Delta^7$

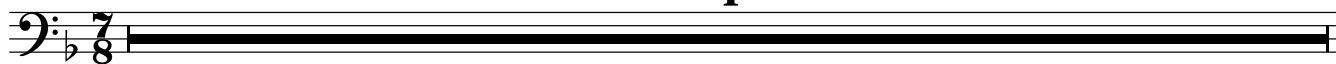


Arabien night

Teil 3

1 $\text{♩} = 180$

4



5



9



13



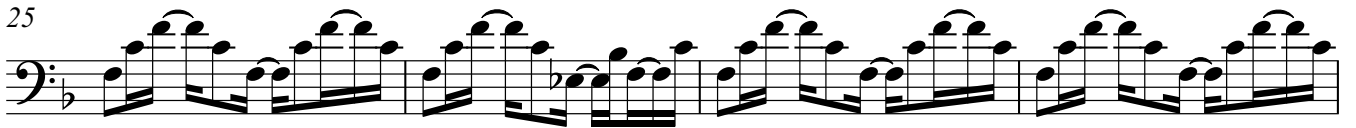
17



21



25



29

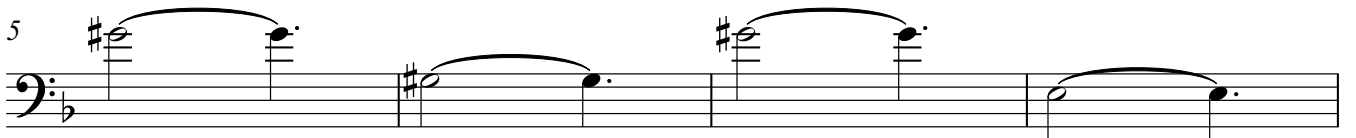


The young prince and princess

1 **A** Thema Teil4



5



9

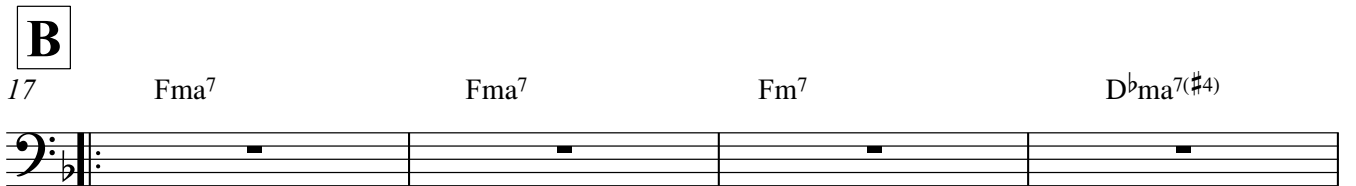


13

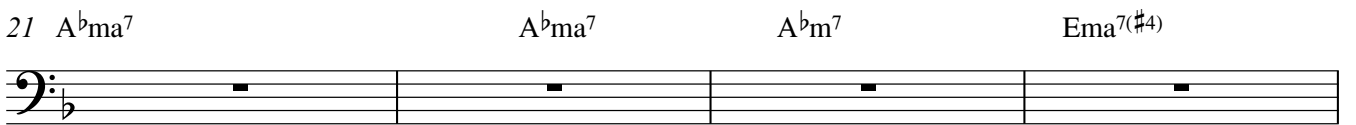


B

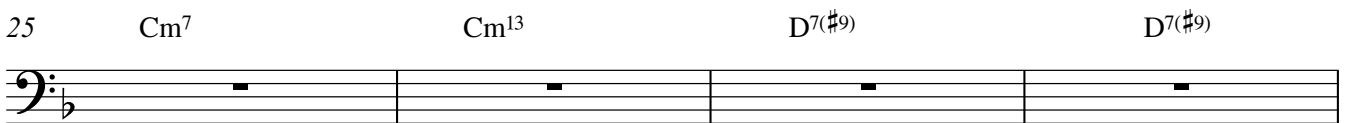
17 Fma7 Fma7 Fm7 D^bma7(#4)



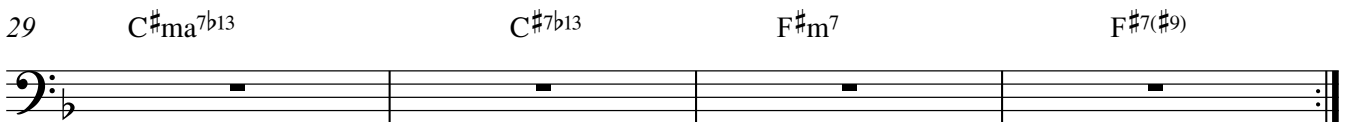
21 A^bma7 A^bma7 A^bm7 Ema7(#4)



25 Cm7 Cm13 D7(#9) D7(#9)



29 C[#]ma7b13 C[#]7b13 F[#]m7 F[#]7(#9)

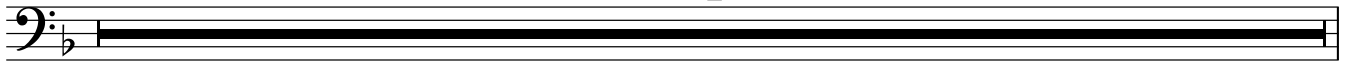


Play SOLOS ON B

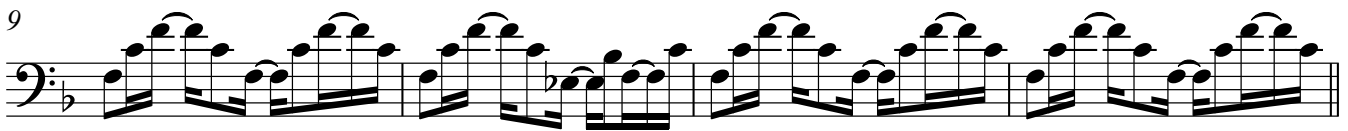
Elektro-Bass, Double Bass

4 33

4



Arabian night (Repr)



Shipwreck on a
magnetic rock

