

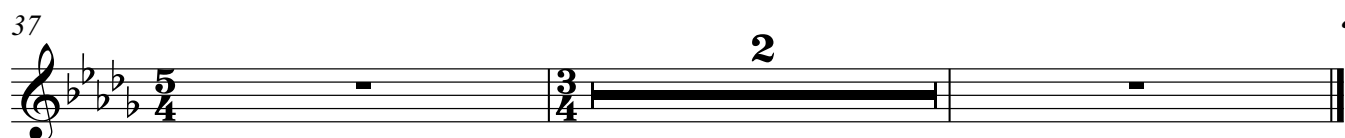
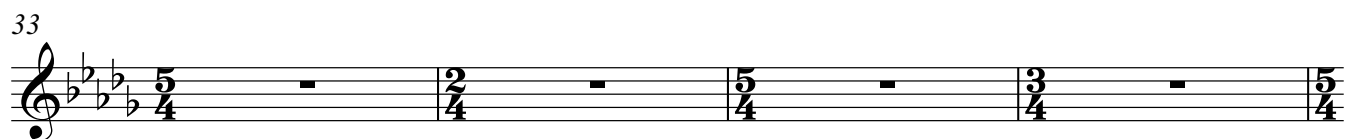
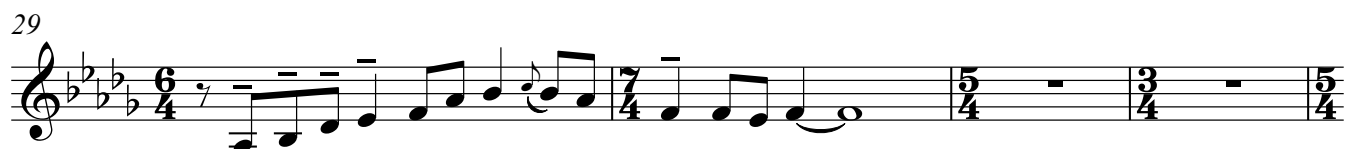
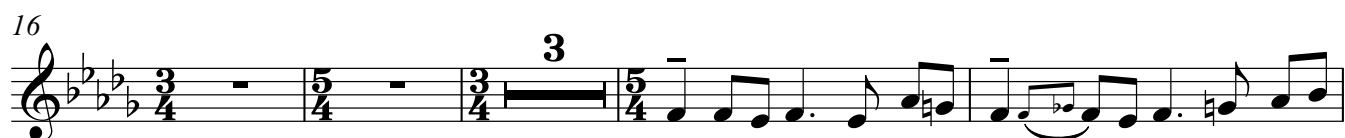
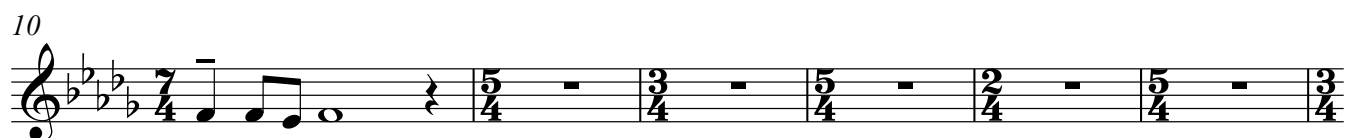
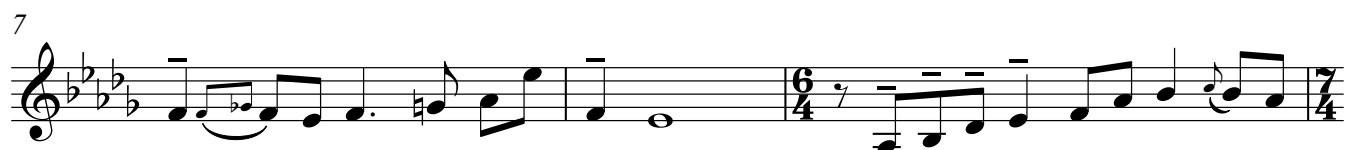
Music After Stories From The Thousand And One Nights

Stimme

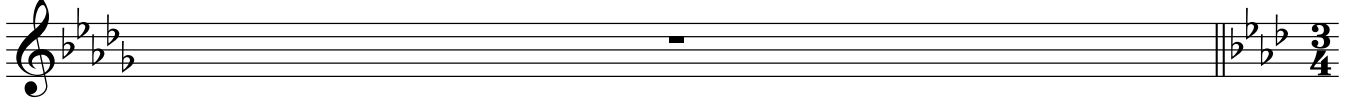
Hugo Read

$\text{♩} = 70$

1. Sultan's theme

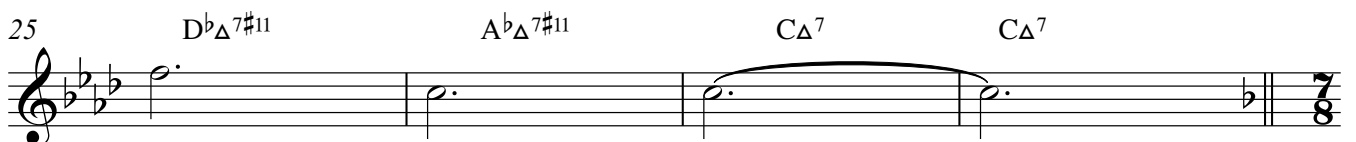
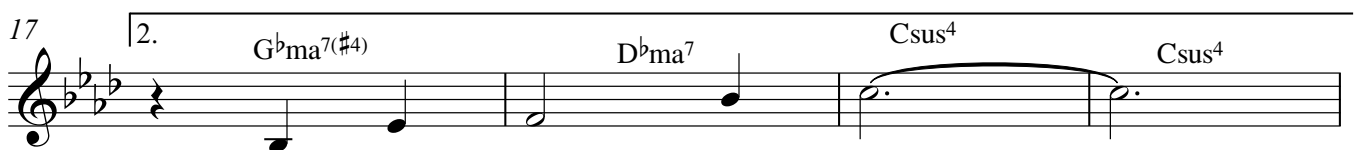
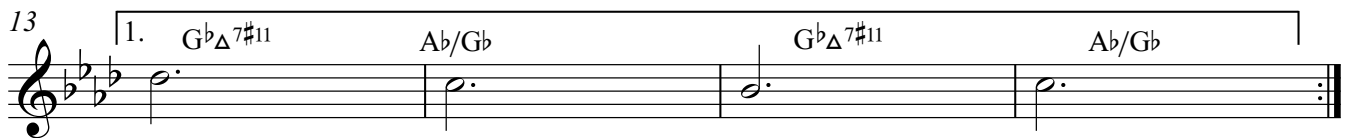
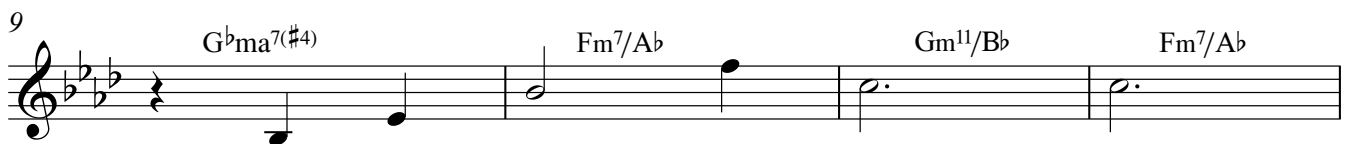
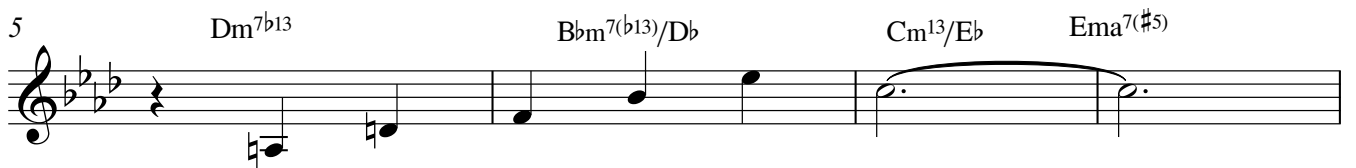


$\text{♩} = 120$



Scheherazade

Teil 2



Arabien night

1 $\text{♩} = 180$

4 4 8 3

18

2 3

22

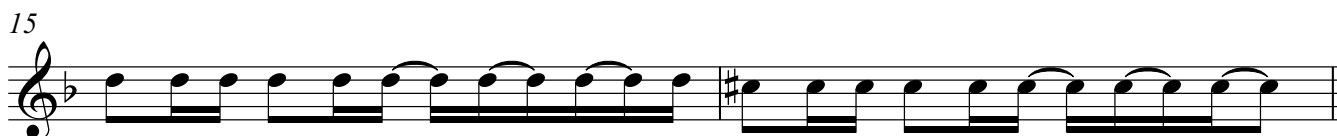
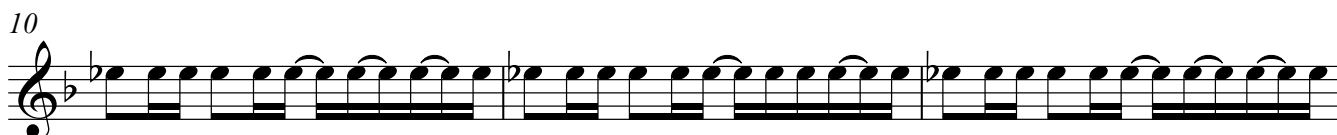
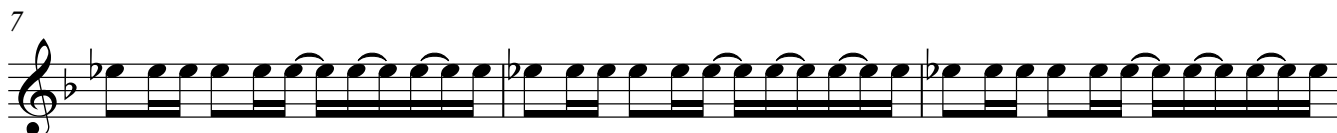
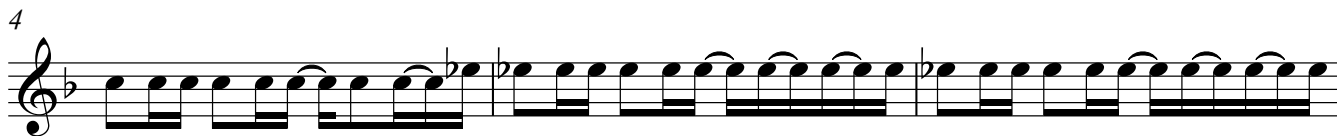
2 3

26

2 3

The young prince and princess

Teil 4

1 **A**

17 **B** Fma7 Fma7 Fm7

20 Dbma7(#4) Abma7 Abma7

23 Abm7 Ema7(#4)

25 Cm7 Cm13 D7(#9)

28 D7(#9) C#ma7b13 C#7b13

31 F#m7 F#7(#9) Play SOLOS ON B

6

33

A musical staff in treble clef with a key signature of one flat. It contains a single whole rest. Above the staff, the number '4' is centered, indicating a four-measure rest.

Arabian night (Repr)

Musical staff starting at measure 1. It features a melodic line with eighth and sixteenth notes, including a triplet of eighth notes. The staff ends with a double bar line and a repeat sign. A '2' is written above the final measure.

Musical staff starting at measure 5. It continues the melodic line from the previous staff, including a triplet of eighth notes. The staff ends with a double bar line and a repeat sign. A '2' is written above the final measure.

Musical staff starting at measure 9. It continues the melodic line from the previous staff, including a triplet of eighth notes. The staff ends with a double bar line and a repeat sign. A '2' is written above the final measure.

Shipwreck on a magnetic rock

Musical staff starting at measure 1. It features a melodic line with dotted half notes and quarter notes. Chord symbols are placed above the staff: F#ma7(#4)/F, F#ma7(#4)/F, Fm9, and Fm9. The staff ends with a double bar line and a repeat sign.

Musical staff starting at measure 5. It continues the melodic line. Chord symbols are placed above the staff: F#ma7(#4)/F, F#ma7(#4)/F, (on cue), Fma7, and Fma7. A circled cross symbol is positioned above the staff between measures 5 and 6. The staff ends with a double bar line and a repeat sign. A '3' is written below the final measure.

Musical staff starting at measure 9. It begins with a circled cross symbol above the staff, followed by a dotted half note. The staff ends with a double bar line and a repeat sign. A '7' is written below the staff.