

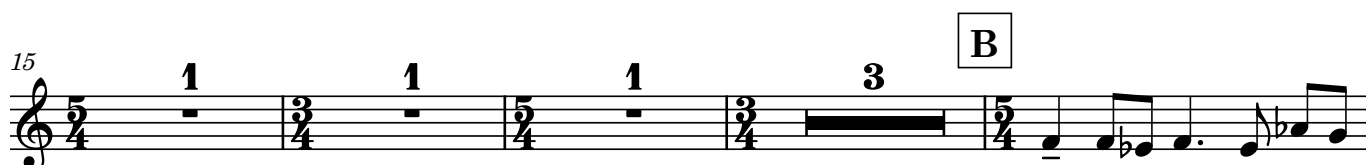
Stimme

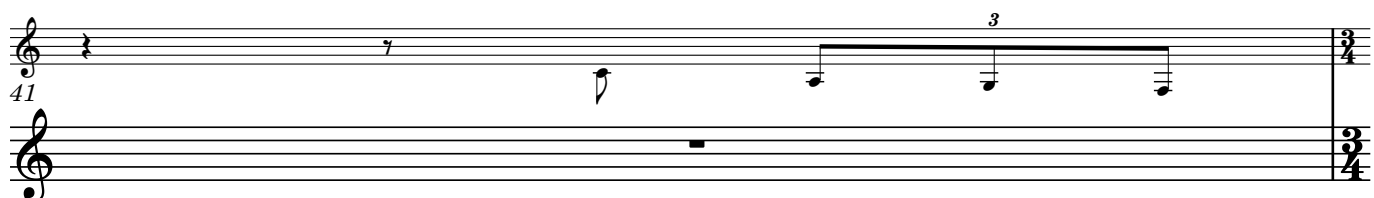
# Music after stories from the Thousand and one Nights

Hugo Read

## Sultans Theme

A  $\text{♩} = 70$





# Scheherazade

1 C 1.tacet  
 Dm7<sup>(b13)</sup> Bbm7<sup>(b13)/Db</sup> Cm13/Eb Dbmaj7<sup>(#11)</sup>

5  $\text{♩} = 120$   
 Dm7<sup>(b13)</sup> Bbm7<sup>(b13)/Db</sup> Cm13/Eb Emaj7<sup>(#5)</sup>

9 Gbmaj7<sup>(#11)</sup> Fm7/Ab Gm11/Bb Fm7/Ab

1. play  
 13 Gbmaj7<sup>(#11)</sup> Ab/Gb Gbmaj7<sup>(#11)</sup> Ab/Gb

2. 17 Gbmaj7<sup>(#11)</sup> Dbmaj7 Csus4 Csus4

21 Dbmaj7<sup>(#11)</sup> Abmaj7<sup>(#11)</sup> Cmaj7 Cmaj7

25 Dbmaj7<sup>(#11)</sup> Abmaj7<sup>(#11)</sup> Cmaj7 Cmaj7

♩ = 180

4

Piano

Stimme

**D** Arabian Night

1 **4** **4** **8** **3**

18 **2** **3**

22 **2** **3**

Open  
free Solo  
D

26 **2** **1**

on cue **E** Young Prince and Princess

30 **4**

3

6

9

12

15

17 **F** Fmaj7 Fmaj7 Fm7

20 Dbmaj7(#11) Abmaj7 Abmaj7

23 Abm7 Emaj7(#11)

25 Cm7 Cm13 D7(add#9)

28 **D7(add#9)** **Dbmaj7(#13)** **Db7(#13)**

31 **F#m7** **F#7(add#9)** on cue **4**

### Reprise Arabian Night

1 **G**

5

9

### Shipwreck on the magnetic rock

1 **Gbmaj7(#11)/F** **Fm9** **Fm9**

5 **Gbmaj7(#11)/F** **Fmaj7** **Fmaj7** on cue **Fmaj7** open Solo

on cue **Fmaj7**

9