

Trombone

Paris, 13.11.2015, mit chant de la terre

Hugo Read

A ♩ = 80

4 Choral 1 4 **B**

mp

13 *mf*

19

C

25 Fmaj7 Ebmaj7 Dbmaj7 Fmaj7 Ebmaj7 Dbmaj7

29 Fmaj7 G7/F Ebmaj7 Dm7 Bm7⁽⁶⁵⁾ Em7 Am7 D7

33 Gmaj7 A7/G Fmaj7 G7/F Gm7/F Em7⁽⁶⁵⁾ Dm7 Db7

37 Gbmaj7 Cm7⁽⁶⁵⁾ Fm7 Bbm7 F#m/E Ebm7⁽⁶⁵⁾ C#m7 C7^(e11)

41 Fmaj7 Ebmaj7 Dbmaj7 Fmaj7 Cm7/Eb Dbmaj7

45 Fmaj7 Ebmaj7 Dbmaj7 Fmaj7 Cm7/Eb Dbmaj7

Detailed description: The image shows a musical score for Trombone. It begins with section A, marked with a tempo of ♩ = 80 and a 4-measure rest. Section B follows with a melodic line in bass clef, marked *mp*. Section C consists of seven lines of chords, each with a 4-measure rest. The chords are: 25 Fmaj7 Ebmaj7 Dbmaj7 Fmaj7 Ebmaj7 Dbmaj7; 29 Fmaj7 G7/F Ebmaj7 Dm7 Bm7⁽⁶⁵⁾ Em7 Am7 D7; 33 Gmaj7 A7/G Fmaj7 G7/F Gm7/F Em7⁽⁶⁵⁾ Dm7 Db7; 37 Gbmaj7 Cm7⁽⁶⁵⁾ Fm7 Bbm7 F#m/E Ebm7⁽⁶⁵⁾ C#m7 C7^(e11); 41 Fmaj7 Ebmaj7 Dbmaj7 Fmaj7 Cm7/Eb Dbmaj7; 45 Fmaj7 Ebmaj7 Dbmaj7 Fmaj7 Cm7/Eb Dbmaj7. Dynamics *mf* and *mp* are indicated.

Trombone

49 Eb7sus4

f

53

D

57 (Reprise)

mf

61

65

69

mp

73 **6** *rit.*..... **1** **E** ♩ = 120

83

86

90

92

94

96

98

100

102

105

F

Bass Kl.Solo

106

Fm7⁽⁶¹³⁾

Musical staff for measures 106-109, showing a whole rest in each measure.

110 Gbm7

Musical staff for measures 110-113, showing a whole rest in each measure.

on cue

on cue

114

Fm7⁽⁶¹³⁾

Musical staff for measures 114-117, showing a whole rest in each measure.

118 G

Musical staff for measures 118-119, showing eighth notes with a flat and a natural.

120

Musical staff for measures 120-121, showing eighth notes with a flat and a natural.

122

Musical staff for measures 122-123, showing eighth notes with a flat and a natural.

124

H

Musical staff for measures 124-126, showing eighth notes with a flat and a natural.

127

Musical staff for measures 127-129, showing eighth notes with a flat and a natural.

130

Musical staff for measures 130-131, showing eighth notes with a flat and a natural.

Trombone

♩ = 100

I

New Orleans Style

Posaune Solo

132 Fmaj7 Fmaj7 C7sus4 C7sus4

136 Fmaj7 Fmaj7 C7sus4 C7sus4

140 Bbmaj7 Em7(♯5) Am7 Dm7

144 Bbm7/Ab Gm7(♯5) Fm7 E7(♯9)

148 Amaj7 Ebm7(♯5) Abm7 Dbm7

PLAY 3 Times

152 Am7/G F♯m7(♯5) Em7 C7(♯9) Fmaj7 Fmaj7 C7sus4 C7sus4

start with Solo

160 Fmaj7 Fmaj7 C7sus4 C7sus4

164 Bbmaj7 Em7(♯5) Am7 Dm7

168 Bbm7/Ab Gm7(♯5) Fm7 E7

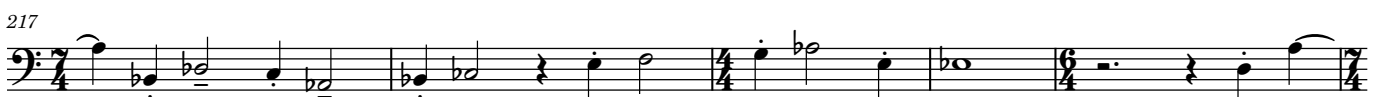
172 Amaj7 Ebm7(♯5) Abm7 Dbm7

176 Am7/G F♯m7(♯5) Em7 C7(♯9)

180 J ♩ = 84 rit. K ♩ = 153

6 3 3

193 Fuge 2



226 **N**

4

233

237

240

243 $\text{♩} = 60$

2

O
247

254

260 *rit...* $\text{♩} = 80$ **P** le chant de la terre

5

271

279

20

Q

304 Am9/G A/G Am7/G F#m7(65) Em7(613)

308 Am7 B7sus4 Bm7 Em9 C#m9

312 Fm7 Am9 Am7/G D9 Em7(613)

316 Am9 D9sus4 D7 Bm Em9

320 C#m7 Fm7 Am9 Cm(maj13)/Eb D7(613)

324 A/G Am7/G F#m7(65) Cmaj7/E

last time !

last time !

327 Am9 B7sus4 Bm7 Em9 Bm7/F# Abm7

331 Fm7 Ab6/G Am9 D7(613) D7

R

335

339

344