

Klavier

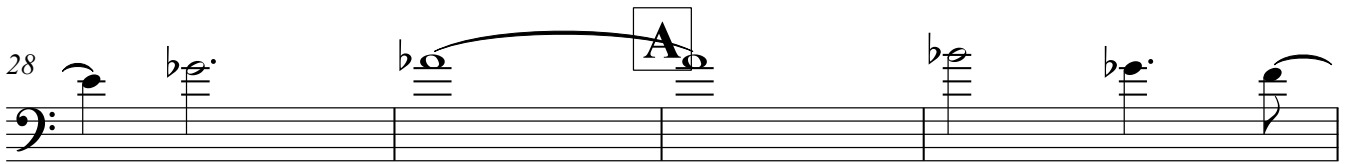
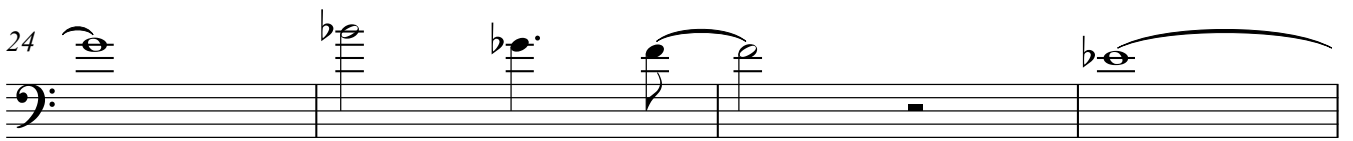
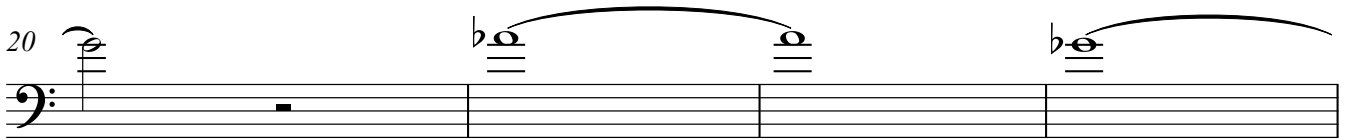
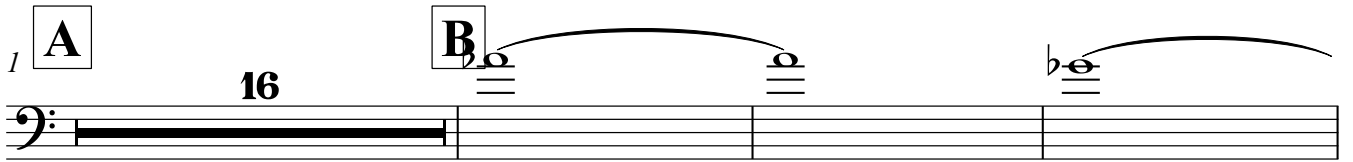
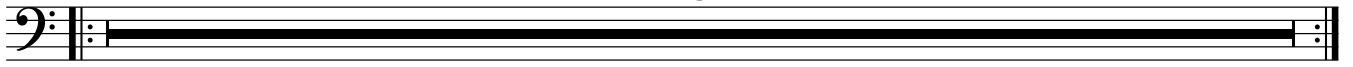
Songs of a wayfarer

Hugo Read

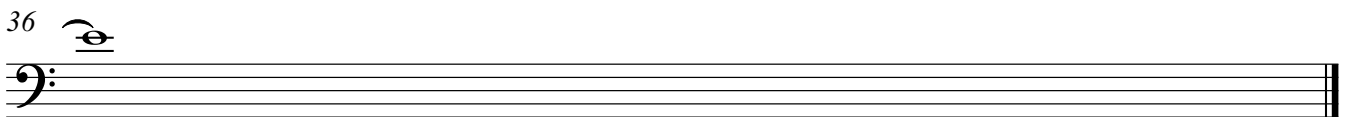
♩=118

1. Hyperion's song of destiny

8



B^b7(#11)



B^b7(#11)

2

♩=132

2. ~~Andante~~ Music

1 Am⁹ 1.tacet Am⁹ B^bm⁹ B^bm⁹

5 A^bm⁹ G^bm⁹ B^bm⁹ Bm⁹

9 Am⁹ Am⁹ Am⁹ Am⁹

13 **B** A^bma⁷#11/C Am/C A^bma⁷#11/C Am/C

17 A^bma⁷#11/C Am/C A⁷(b9)b13/C# D⁷b13

21 **C** Bm⁷/D E^b7(#9)b13 Am⁹ Am⁹

25 Am⁹ Am⁹ Am⁹ Am⁹

29 Am⁹ Am⁹

A ♩=114

3. Song of a wayfarer

1

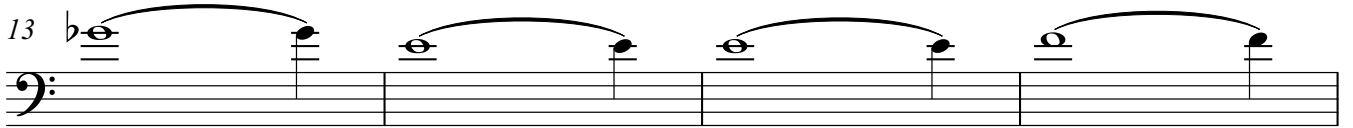
5

Posaune

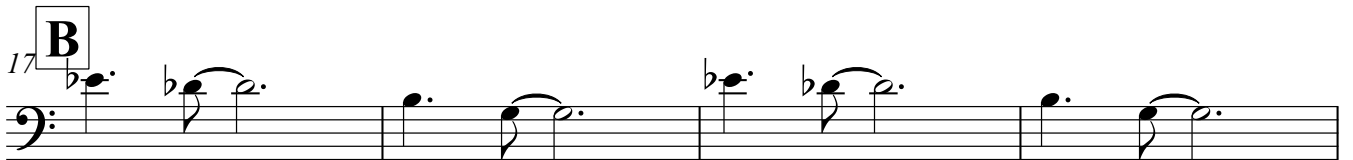
9



13



17 **B**



21




4. The Light In The Dark

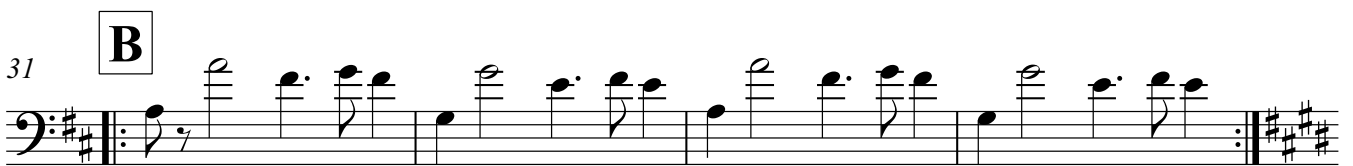
25 **A** ♩=140



29



31 **B**



35



39

